

# Field Replaceable PCB Connectors

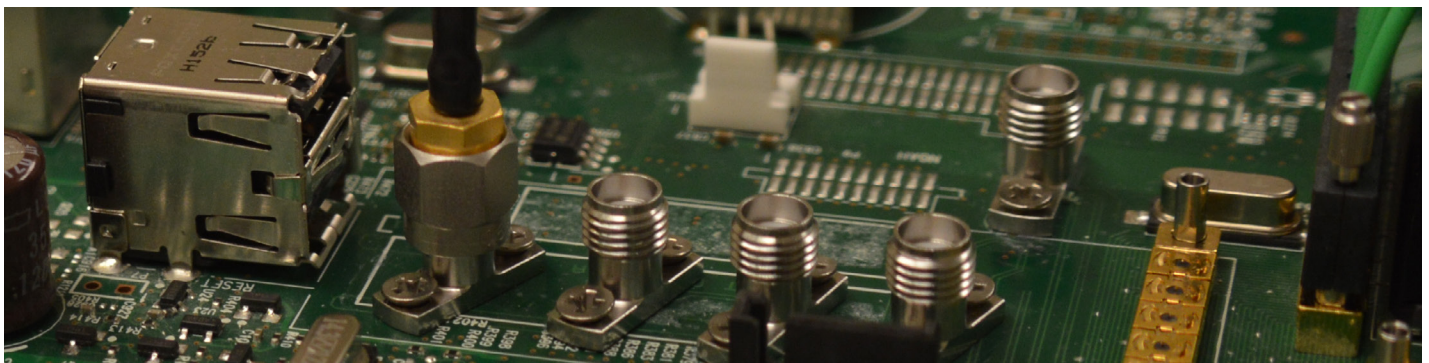


## WHEN SIGNAL INTEGRITY AND DENSITY MATTER

Carlisle Interconnect Technologies' (CarlisleIT) Field Replaceable PCB connectors are designed to simplify board trace testing and save time and expense with a solderless installation, eliminating the risk for damaging sensitive equipment. These standard connectors are part of CarlisleIT's full lineup of low cost, customizable interconnect solutions delivering superior signal performance and value.

## FEATURES AND BENEFITS

Feature	Customer Benefit
DC-65GHz: 3.5mm/34GHz, 2.92mm/40GHz, 2.40mm/50GHz, 1.85mm/65GHz	Multiple interface options cover a wide frequency band, offering standard and readily available stock with testing up to 65GHz
Push-on, Standard Threaded and Secure-Thread™ stripline configurations	Connector configuration options and cable attachment methods conform to a variety of application needs
Solderless design	Elimination of soldering enables fast and easy installation of high performance connectors that can be removed and reused without damaging the board, saving time and reducing cost



Field replaceable PCB connectors. Learn more: [tmlaunch.carlisleit.com/field-replaceable](https://tmlaunch.carlisleit.com/field-replaceable)

## SUGGESTED APPLICATIONS

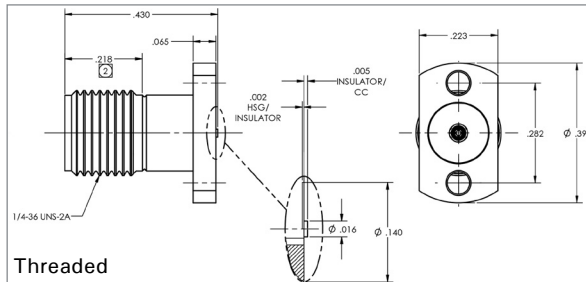
- » High speed digital systems
- » Vector network analyzer (VNA)
- » Oscilloscope
- » Bit error ratio tests (BERT)
- » Switch matrix
- » Automatic test equipment (ATE)
- » Semiconductors
- » Design validation testing
- » Integrators
- » Military/defense
- » Electronic sensors
- » Radar/guidance systems

Order Information							
Threaded				Push On		Secure-Thread	
Part Number							
4-7599-810-10	4-K999-810-10	4-9099-810-10	4-V999-810-10	3-R899-816-10	3-W899-816-10	3-S399-816-10	3-W399-816-10
3.5mm Straight 2 Hole Flange Mount Jack, .020 Pin	2.92mm Straight 2 Hole Flange Mount Jack, .020 Pin	2.40mm Straight 2 Hole Flange Mount Jack, .016 Pin	1.85mm Straight 2 Hole Flange Mount Jack, .016 Pin	SSMP Male, Limited Detent, 4 Hole (In-line) Flange Mount, .030 Pin	WMP Male, Limited Detent, 4 Hole (In-line) Flange Mount, .030 Pin	SSMP Male, Smooth Bore, 4 Hole (In-line) Flange Mount, .030 Pin	WMP Male, Smooth Bore, 4 Hole (In-line) Flange Mount, .030 Pin
34GHz	40GHz	50GHz	67GHz	40GHz	50GHz	40GHz	50GHz

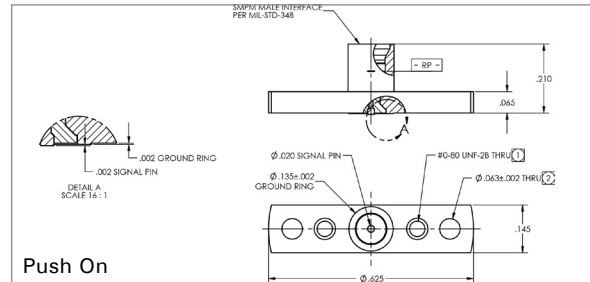
# Specifications and Performance

# Field Replaceable PCB Connectors

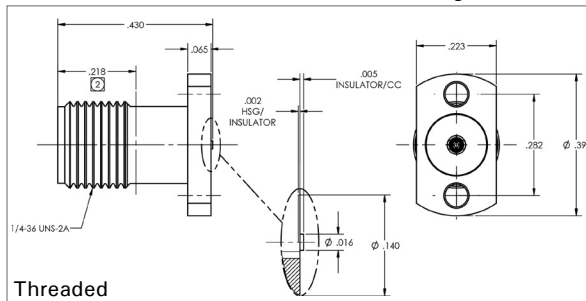
4-7599-810-10 Outline Drawing



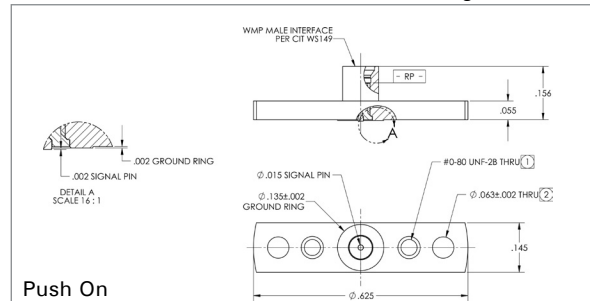
3-R899-816-10 Outline Drawing



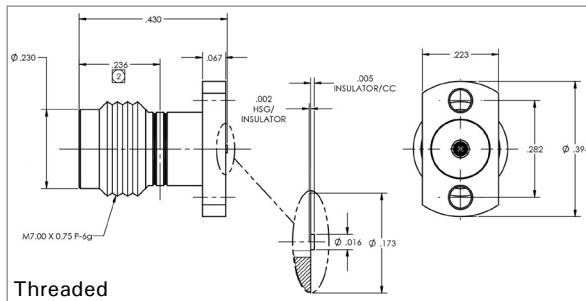
4-K999-810-10 Outline Drawing



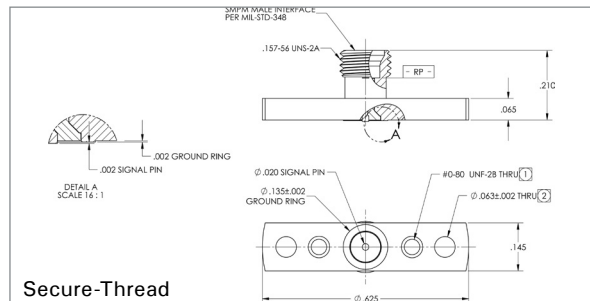
3-W899-816-10 Outline Drawing



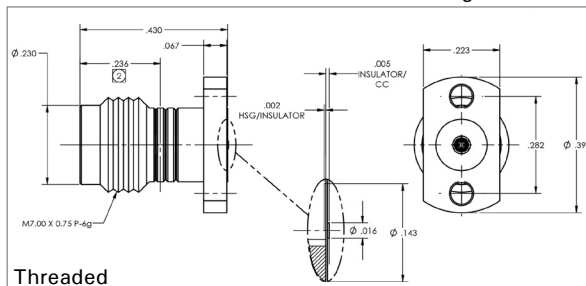
4-9099-810-10 Outline Drawing



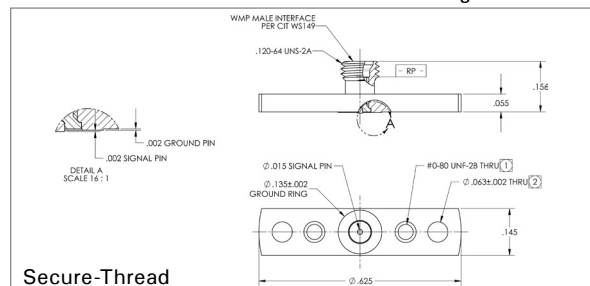
3-S399-816-10 Outline Drawing



4-V999-810-10 Outline Drawing



3-W399-816-10 Outline Drawing



## Check out other related products

- » **CoreHC** [tmlaunch.carlisleit.com/core-hc](http://tmlaunch.carlisleit.com/core-hc)
- » **Secure-Thread** [tmlaunch.carlisleit.com/secure-thread](http://tmlaunch.carlisleit.com/secure-thread)
- » **CoreGD** [tmlaunch.carlisleit.com/core-gd](http://tmlaunch.carlisleit.com/core-gd)

## Connect with us today!

[tmlaunch.carlisleit.com](http://tmlaunch.carlisleit.com)  
**TMSales@CarlisleIT.com**