

EXCEL | MATE (HVSL1200)



High Voltage Safety Lock

HVSL1200, which is the latest generation of the EXCEL | MATE series, has been specially designed for use in HEV applications.

The RADSOK® Technology R4 version 12mm and an interlock solution ensure a safe and reliable

KEY FEATURES

With interlock solution

RADSOK® Technology R4 version 12mm

Shielding performance: EMI/RFI 60DB

Sealing, IP68 (mated), IP6K9K

Touch-proof, IP2XB

Multiple coding positions

APPLICATIONS

HEV Battery

Inverters

Junction boxes

Power distribution boxes

MECHANICAL

Durability ≥ 50 mating cycles

Wire range 70mm² to 95mm²

ELECTRICAL

Rated voltage 1000V DC

Rated current 350A Max @ ambient temperature 70°C

Insulator resistance > 100MΩ

Dielectric withstand voltage 3000V AC

ENVIRONMENTAL

Sealing IP68, IP6K9K (mated)

Touch-proof IP2XB

Temperature range -40°C to 125°C

STANDARDS

USCAR-2

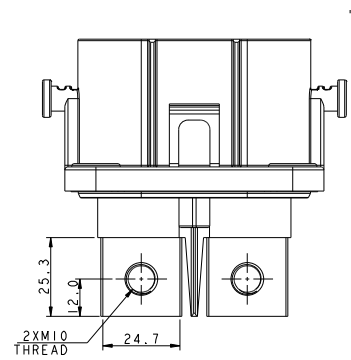
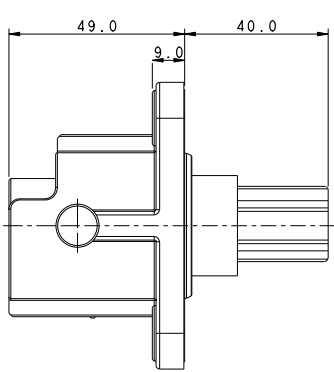
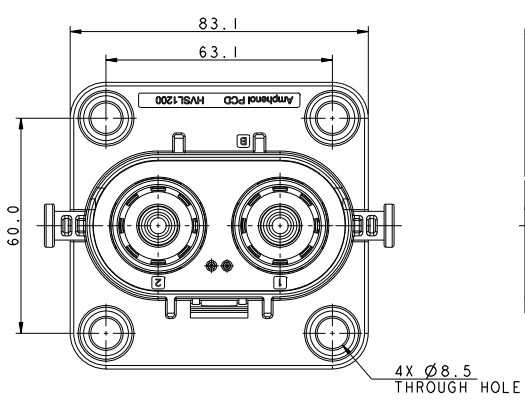
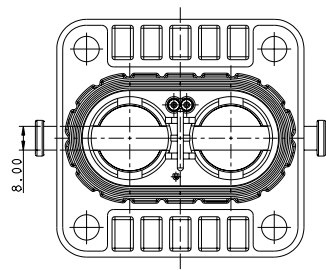
USCAR-37

LV-215

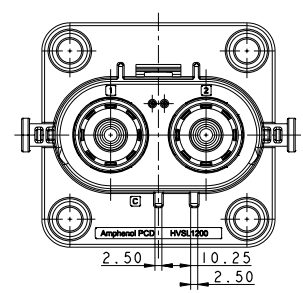
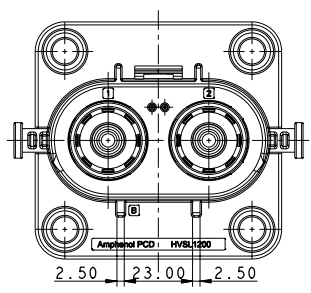
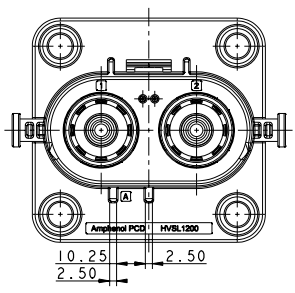
RoHS

Excel|Mate Max
(HVSL 1200)

2 PIN RECEPTACLE BOX MOUNTED

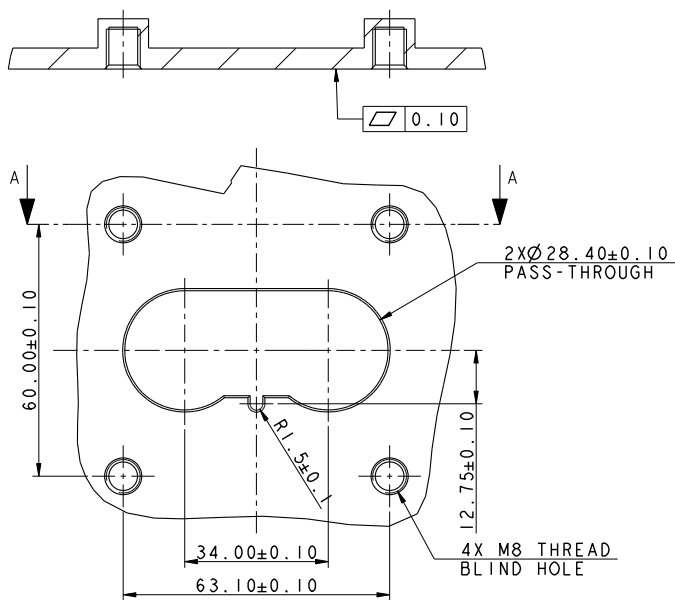


INSERT ORIENTATIONS

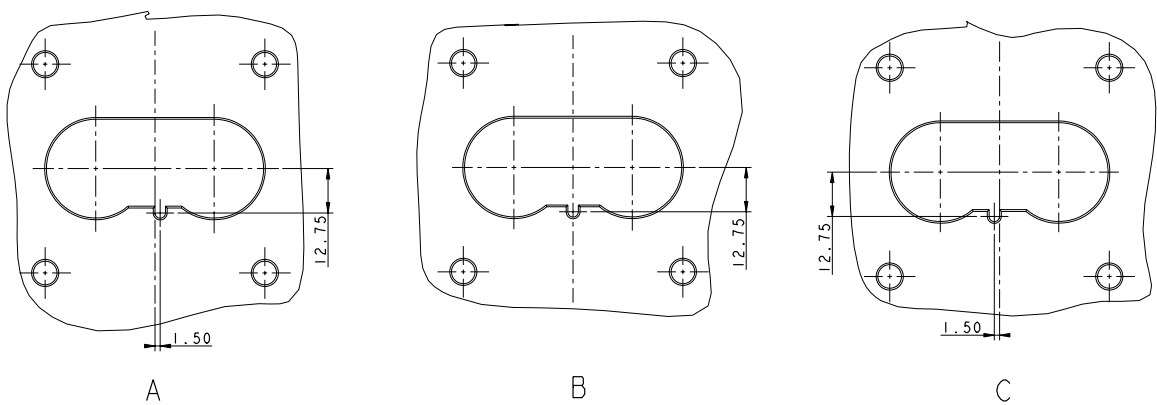


	Coding A	Coding B	Coding C
P/N	HVSL1200 02 2 A	HVSL1200 02 2 B	HVSL1200 02 2 C

PANEL MOUNTING DIMENSIONS

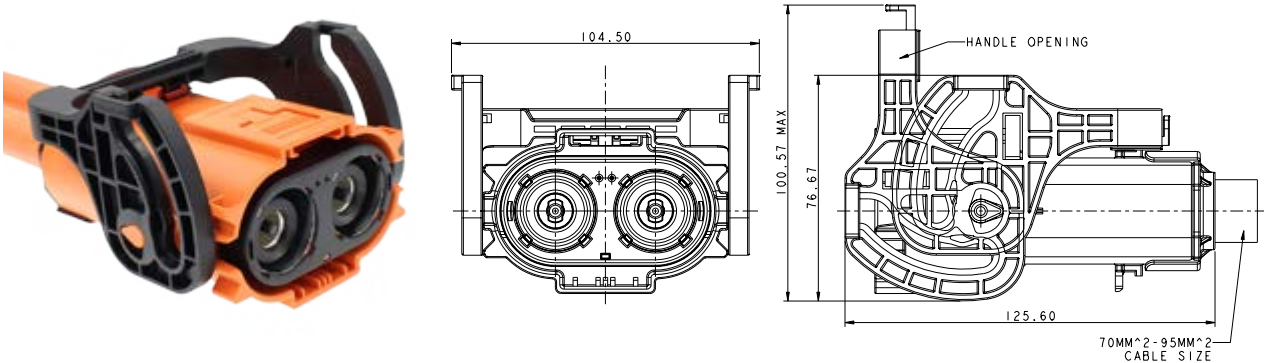


MOUNTING PANEL LAYOUT
RECOMMENDED THICKNESS 3MM MIN.

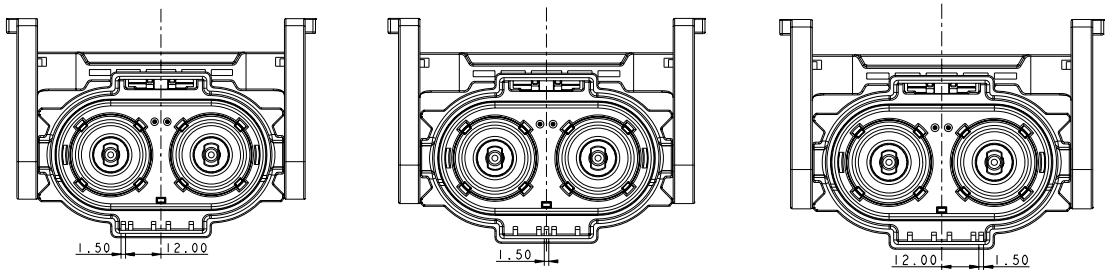


ExcelMate Max (HVSL 1200)

2 PIN PLUG

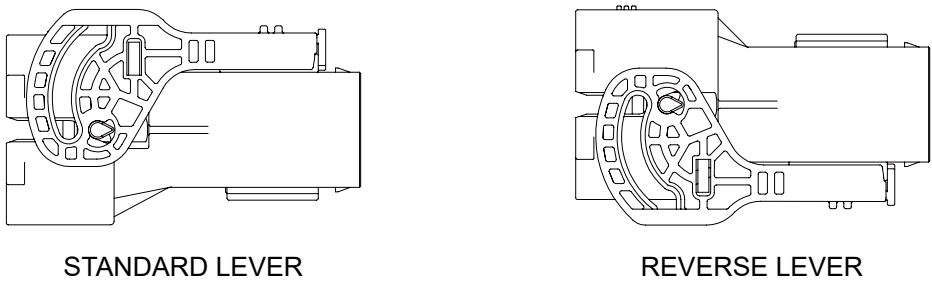


INSERT ORIENTATIONS

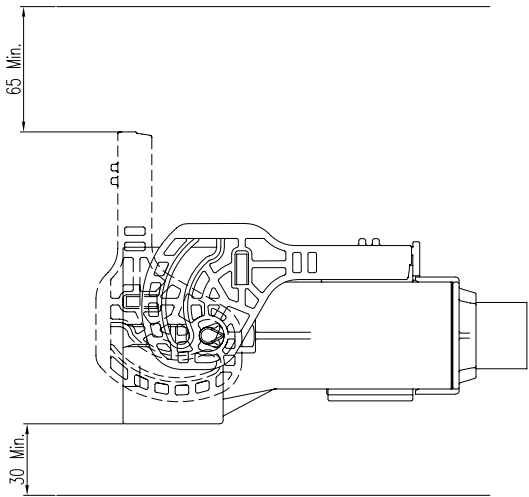


	Coding A	Coding B	Coding C
P/N	HVSL1200 06 2 A	HVSL1200 06 2 B	HVSL1200 06 2 C

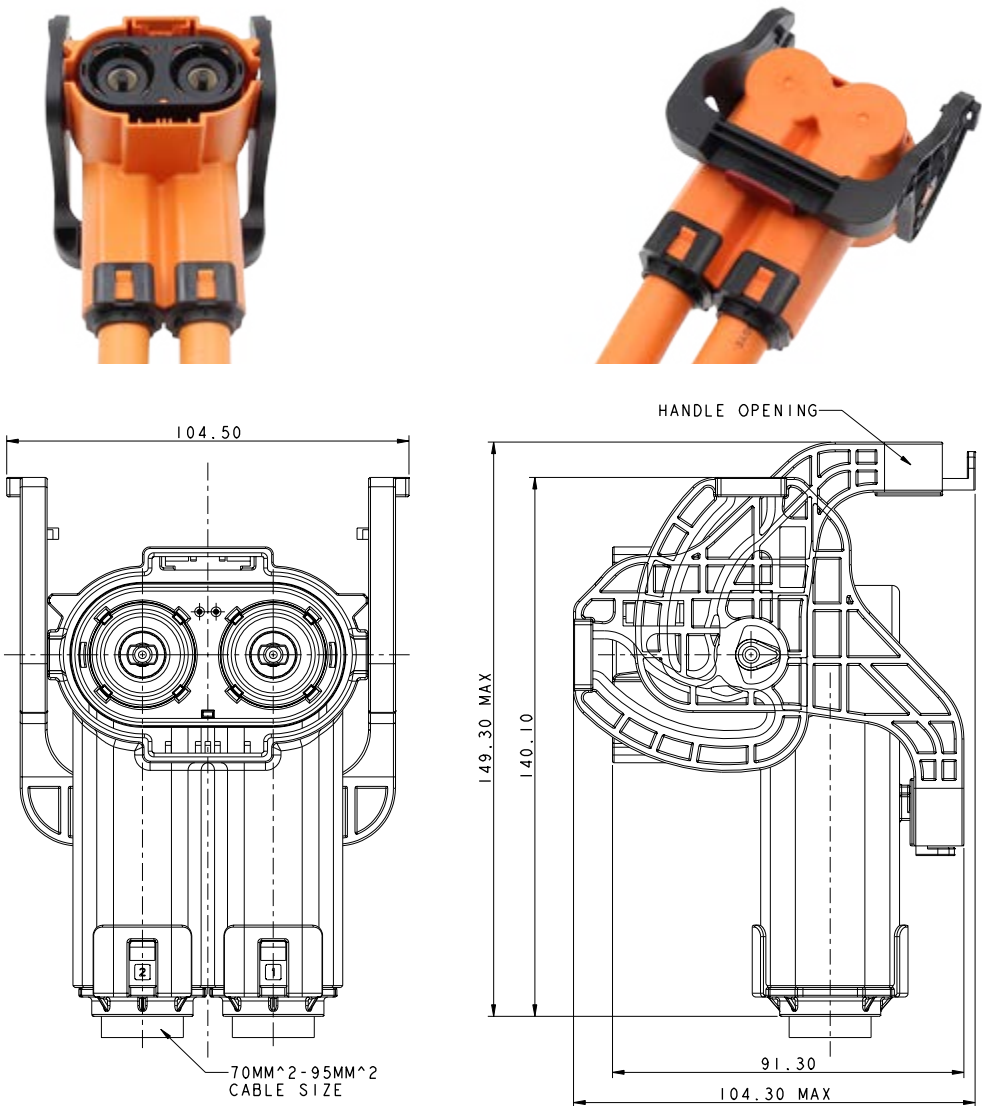
LEVER POSITION



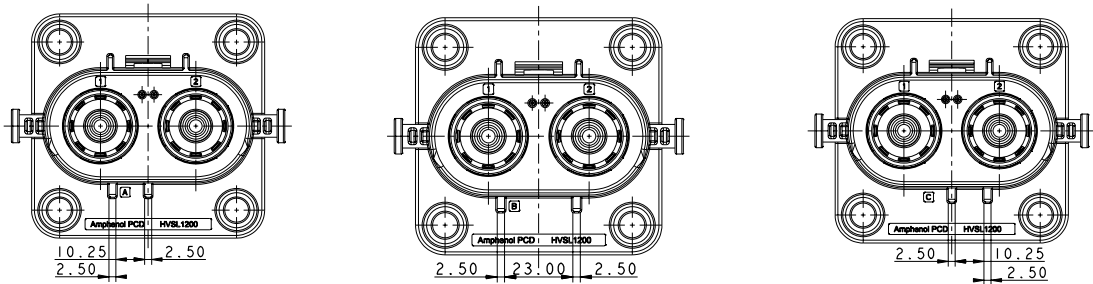
INSTALLATION CLEARANCE



2 PIN PLUG RIGHT ANGLE



INSERT ORIENTATIONS



	Coding A	Coding B	Coding C
P/N	HVSL1200 08 2 A	HVSL1200 08 2 B	HVSL1200 08 2 C

HOW TO ORDER (HVSL 1200)

HOW TO ORDER: PLUG

	HVSL1200	06	2	A	0	70
Product type:						
06: Straight plug						
08: Right angle plug						
Position:						
2: 2 position						
Coding / Alternate position:						
A: Coding A						
B: Coding B						
C: Coding C						
Interlock:						
0: Without interlock						
1: With interlock						
Cable size:						
70: 70mm ² cable						
95: 95mm ² cable						

HOW TO ORDER: RECEPTACLE

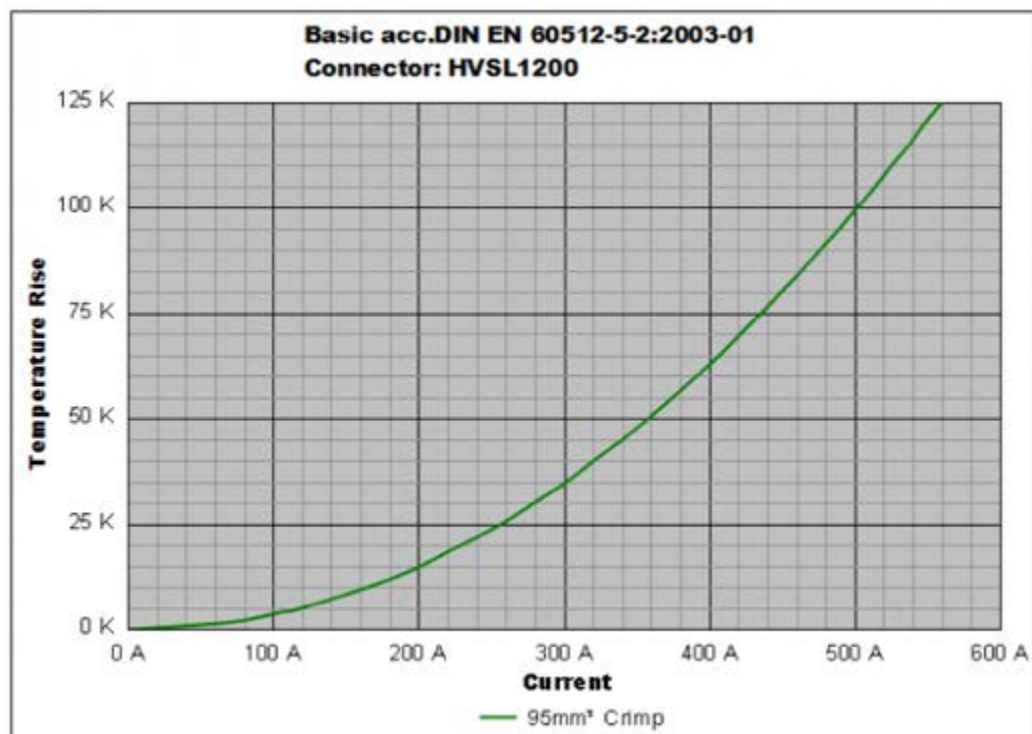
	HVSL1200	02	2	A	0	H10
Product type:						
02: Box mounted receptacle						
Position:						
2: 2 position						
Coding / Alternate position:						
A: Coding A						
B: Coding B						
C: Coding C						
Interlock:						
0: Without interlock						
1: With interlock						
Cable size:						
H10: OT terminal						

EXTRACTION TOOL FOR RECEPTACLE SIGNAL CONTACT

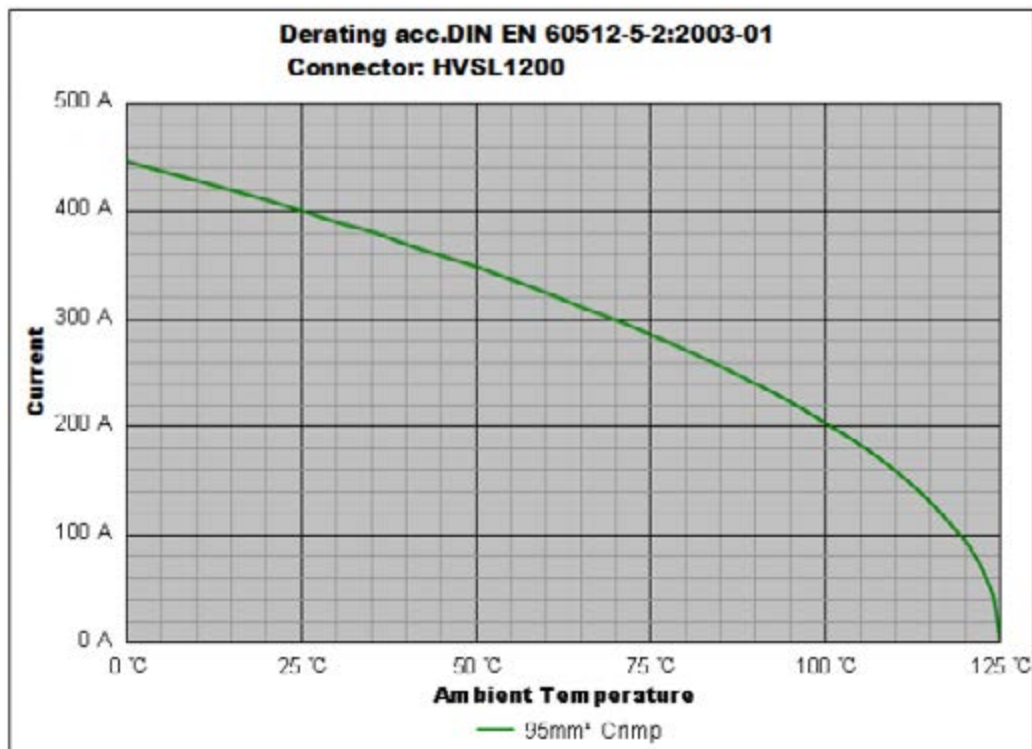
HVIL-contact Extraction tool: HVTOOL10R



HVSL 1200 | Temperature Rise



HVSL 1200 | Derating Curve



Remark: tests carried out on the complete connector.

Mouser Electronics

Authorized Distributor

Click to View Pricing, Inventory, Delivery & Lifecycle Information:

[HVSL1200062B170](#) [HVSL1200022B1H10](#) [HVSL1200082B195](#) [HVSL1200022A1H10](#) [HVSL1200082A170](#)
[HVSL1200022C1H10](#) [HVSL1200082C170](#) [HVSL1200062C170](#) [HVSL1200062C195](#) [HVSL1200082C195](#)
[HVSL1200082B170](#) [HVSL1200062A170](#) [HVSL1200082A195](#) [HVSL1200062A195](#) [HVSL1200062B195](#)