

# Switchcraft®

[Previous Page](#) | [Return to Index](#) | [Next Page](#)





## EAC RECEPTACLES

### SERIES EAC

1. **EAC227**
2. **EAC311**
3. **EAC305**
4. **EAC323**
5. **EAC309**
6. **EAC325**
7. **EAC333**
8. **EAC333S**

[click here to download a schematic drawing](#)

(you will need to have Adobe Acrobat installed on your system to do this)

[click here to download a schematic drawing](#)

(you will need to have Adobe Acrobat installed on your system to do this)

[click here to download a schematic drawing](#)

(you will need to have Adobe Acrobat installed on your system to do this)

[click here to download a schematic drawing](#)

(you will need to have Adobe Acrobat installed on your system to do this)

[click here to download a schematic drawing](#)

(you will need to have Adobe Acrobat installed on your system to do this)

[click here to download a schematic drawing](#)

(you will need to have Adobe Acrobat installed on your system to do this)

[click here to download a schematic drawing](#)

(you will need to have Adobe Acrobat installed on your system to do this)



Two and three-pin/contact grounding primary power receptacles are designed to meet EN 60 320, as well as applicable UL, CSA, VDE and other specifications. Receptacles feature choice of short, standard or long solder lugs or FASTON<sup>®</sup> terminals. Receptacles snap-in or screw mount from the front or rear of panel. Receptacles have orbitally riveted lugs

(except EAC233, EAC305, EAC323 EAC325, EAC333, EAC405) for superior mechanical/electrical connections. Extended socket versions permit minimum behind-panel depth.

Receptacles are designed for use in European and domestic instrumentation, power rack mounted devices, test equipment and appliances. Three-pin male receptacles have .125 inch (3.18 mm) longer center (ground) pin. Ground circuit is established before power circuits "make", and is maintained until after power circuits "break".



## **EAC405**

### **SPECIFICATIONS**

#### **ELECTRICAL**

**Insulation Resistance:** 2 million megohms @ 500 V DC.

**Dielectric Strength:** 1500 V (rms).

**Arcing Test:** Meets UL 498 Standard.

#### **MECHANICAL**

**Solderability Standard:** Meets MIL-STD-202, method 208, EIA RS-186-9E.

#### **ENVIRONMENTAL**

**Thermal Range:** -55° C to +65° C (except EAC45x series).

**Salt Spray:** Meets MIL-STD-202, method 101; EIA-RS-186-5E, method 5.

## **MATERIAL**

**Shell:** EAC307 through EAC327. Black polyester. EAC303, EAC307 through EAC315. UL flammability rating of UL94 V-0, yellow card #E45575.

EAC309 through EAC327, EAC333. Black polyester, UL flammability rating of UL94 V-0, yellow card #E45575.

EAC233, EAC233S, EAC305, EAC325, and EAC333S. Black polycarbonate, UL flammability rating of UL94 V-0, yellow card #E45329.

EAC323, EAC409 through EAC411 Black polycarbonate, UL flammability rating, or equivalent UL94 V-0, yellow card #E33640, or equivalent.

**Pins, Contacts and Terminals:** Plated copper alloy.

☒ **EAC227**--2-pin male receptacle with standard solder lug terminals, similar to EAC327.

☒ **EAC233**--2-pin, male receptacle with right-angle housing for PC mount. PC terminals project .130 inch (3.3 mm) to extend through PC board. Rear of panel mount. Two, .136 inch (3.45 mm) diameter holes permit fastening to PC board; two additional .136 inch (3.45 mm) holes are for fastening to panel or chassis, if required.

☒ **EAC233S**--Similar to EAC233, but with two, snap-in retainers through mounting flanges for PC mount.

**EAC305**--3-contact female receptacle. Front mount with two, #4 screws or .094 inch (2.38 mm) diameter rivets (not supplied).

**EAC309**--3-pin male receptacle with standard lug terminals. Mounts from front or rear of panel with two, #5 screws or .125 inch (3.18 mm) diameter rivets (not supplied).

**EAC311**--3-pin male receptacle with FASTON® terminals. Mounts from front or rear of panel with two, #5 screws or .125 inch (3.18 mm) diameter rivets (not supplied).

☒ **EAC315**--3-pin male receptacle with long solder lug terminals. Mounts from front or rear of panel with two, #5 screws or .125 inch (3.18 mm) diameter rivets (not supplied).

**⌘EAC319**--3-pin male receptacle with short solder lug terminals. Mounts from front or rear of panel with two, #5 screws or .125 inch (3.18 mm) diameter rivets (not supplied).

**⌘EAC323**--3-pin male receptacle with short solder lug terminals. Extended socket housing (mounting flange on rear of receptacle) provides more behind panel clearance. Mounts with two, #4 screws or .094 inch (2.38 mm) diameter rivets (not supplied).

**EAC325**--3-contact female receptacle with short solder lug terminals. Extended housing (mounting flange on rear of receptacle) provides more behind panel depth. Mounts with two, #4 screws or .094 inch (2.38 mm) diameter rivets (not supplied).

**EAC327**--3-pin male receptacle, similar to EAC319 except with standard solder lugs.

**EAC333**--3-pin, 10A, 250V male receptacle with right-angle housing for PC mount. PC terminal and hole mounting details are the same as for EAC233. Ground pin is integral with ground solder lug on rear of receptacle.

**⌘EAC333S**--Similar to EAC333, but with two, snap-in retainers through mounting flanges for PC mount.

**⌘EAC405**--3-contact female receptacle with standard solder lug terminals. Snap-in panel mounting.

**EAC409**--3-pin male receptacle with standard solder lug terminals. Snap-in panel mounting.

**EAC411**--3-pin male receptacle with FASTON terminals. Snap-in panel mounting.

**EAC413**--3-pin male receptacle with FASTON terminals on LINE and NEUTRAL and a solder lug on EARTH GROUND. Snap-in panel mounting.

**EAC451**--3-contact female receptacle with straight PC terminals for use in "HOT" applications. Snap-in panel mounting.

**EAC453**--Same as EAC451 except with solder lug terminations.

**EAC455**--Same as EAC451 except with FASTON terminations.

**EAC457**--Same as EAC451 except with FASTON power

terminations and solder lug ground termination.

⌘ Available on special order only; contact Switchcraft for price and delivery.

## SERIES EAC

Part Number	Pins/ Contacts <sup>1</sup>	Mounting <sup>2</sup>	Terminals	Listings	Ratings	Switchcraft Mating Number <sup>3</sup>	Comments <sup>4</sup>	
⌘EAC227	M	Front or Rear	Solder Lug	UL CSA	15 A, 250 V AC	P2392	-	
⌘EAC233	M	Rear	PC	UL, CSA,  VDE	15 A, 250V AC  10 A, 250 V AC	P2392	Semko, Demko, Nemko, SETI, and SEV Approved	
⌘EAC233S	M	Rear	PC	UL, CSA,  VDE	15 A, 250 V AC  10 A 250 V AC	P2392	Semko, Demko, Nemko, SETI, and SEV Approved	
EAC305	F	Front	Solder Lug	UL & VDE  VDE	15 A, 250 V AC  10 A, 250 V AC	-	Semko, and SEV Approved	
EAC309	M	Front or Rear	Solder Lug	UL & CSA  VDE	15 A, 250 V AC  10 A, 250 V AC	P2392	Demko, Semko, Nemko, SETI, and SEV Approved	
EAC311	M	Front or	FASTON	UL & CSA	15 A, 250 V AC	P2392		

		Rear		VDE	10 A, 250 V AC		Semko, Demko, Nemko, SETI, and SEV Approved
EAC315	M	Front or Rear	Solder Lug (Long)	UL & CSA	15 A, 250 V AC	P2392	
				VDE	10 A, 250 V AC		
EAC319	M	Front or Rear	Solder Lug (Short)	UL & CSA	15 A, 250 V AC	P2392	-
				VDE	10 A, 250 V AC		
EAC323	M	Front or Rear	Solder Lug (Short)	UL & CSA	15 A, 250 V AC	P2392	Mounting flange on rear Semko, Nemko, SETI Approved
				VDE	10 A, 250 V AC		
EAC325	F	Rear	Solder Lug (Short)	UL & CSA	15 A, 250 V AC	-	Mounting flange on rear
				VDE	10 A, 250 V AC		
EAC327	M	Front or Rear	Solder Lug	UL & CSA	15 A, 250 V AC	P2392	Demko, Semko, Nemko SETI and SEV Approved
				VDE	10 A, 250 V AC		
EAC333	M	Rear	PC	UL, & VDE	15 A, 250 V AC	P2392	Semko, Demko, Nemko, SETI, and SEV Approved
				CSA	10 A, 250 V AC		

EAC333S	M	Rear	PC	UL & VDE	10 A, 250 V	P2392		
				CSA				
EAC405 <sup>5</sup>	F	Snap-In	Solder Lug	UL & CSA	15 A, 250 V AC	-	-	
				VDE	10 A, 250 V AC			
EAC409 <sup>5</sup>	M	Snap-In	Solder Lug	UL, & CSA	15 A, 250 V AC	P2392	Demko, Semko, Nemko, SETI and SEV Approved	
				VDE	10 A, 250 V AC			
EAC411 <sup>5</sup>	M	Snap-In	FASTON	UL, CSA	15 A, 250 V AC	P2392	Semko, Demko, Nemko, SETI and SEV Approved	
				VDE	10 A, 250 V AC			
EAC413 <sup>5</sup>	M	Snap-In	Solder Lug/ FASTON	UL, CSA	15 A, 250 V AC	P2392	Semko, Demko, Nemko, SETI and SEV Approved	
				VDE	10 A, 250 V AC			
EAC451 <sup>6</sup>	F	Snap-In <sup>6</sup>	PC	UL, & CSA	15 A, 250 V AC	-	Rated for use up to 120°C	
				VDE	10 A, 250 V AC			
EAC453 <sup>6</sup>	F	Snap-In <sup>6</sup>	Solder Lug	UL, & CSA	15 A, 250 V AC	-	Rated for use up to 120°C	

				VDE	10 A, 250 V AC			
EAC455 <sup>6</sup>	F	Snap-In <sup>6</sup>	FASTON	UL, & CSA	15 A, 250 V AC	-	Rated for use up to 120°C	
				VDE	10 A, 250 V AC			
EAC457 <sup>6</sup>	F	Snap-In <sup>6</sup>	Solder Lug/ FASTON	UL, & CSA	15 A, 250 V AC	-	Rated for use up to 120°C	
				VDE	10 A, 250 V AC			

1 M = Male; F = Female.

2 F = Front; R = Rear. See mounting drawings for mounting details.

3 Also mates with Belden and other standard cords.

4 Semko (Sweden), Demko (Denmark), Nemko (Norway), SETI (Finland), SEV (Switzerland).

5 Receptacles are snap-in mount, and can be ordered to accommodate .030, .040, .050 and .060 inch panel thickness. For snug fit in panel or for other specifying assistance, contact Switchcraft.

6 Available only for .050 inch and .060 inch panel thickness

⌘ Available on special order only; contact Switchcraft for price and delivery.

UL No. E38829-EAC-309 thru -327 UL No. E65081-EAC-305

CSA Guide 365-E-1, Class 6233, File Card No. LR27474

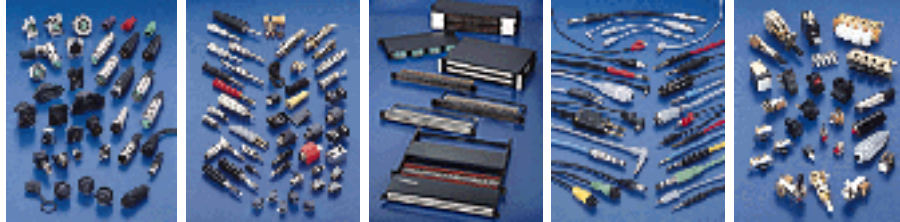
VDE Certificate of Compliance No. 731 (EAC-305, -325, -405), all others VDE approval No. 3181.

If you have been using a 15 amp rated Switchcraft EAC connector ending in an even number, you can now buy an identical part number that has a 10 amp European rating in addition to the 15 amp UL and CSA approval. The part number for the new dual rated part is one less than the old part number (eg. EAC310 becomes EAC309, EAC412040 becomes EAC411040, EAC234 becomes EAC233, EAC458050 becomes EAC457050, etc.)

**NOTE:** Contact your Switchcraft Representative for price and delivery.

[Previous Page](#) | [Return to Index](#) | [Next Page](#)

**To search a category please click on the corresponding icon:**



| [Connectors](#) | [Jacks and Plugs](#) |  
| [Patch Panels, Patch Kits & Jackfields](#) | [Cable Assemblies and Patch Cords](#) | [Switches](#) |

**All products shown are covered by Switchcraft's limited lifetime warranty.**

| [Switchcraft home](#) |  
[About Us](#) | [Products](#) | [What's New](#) | [Search](#) | [Contact Us](#)