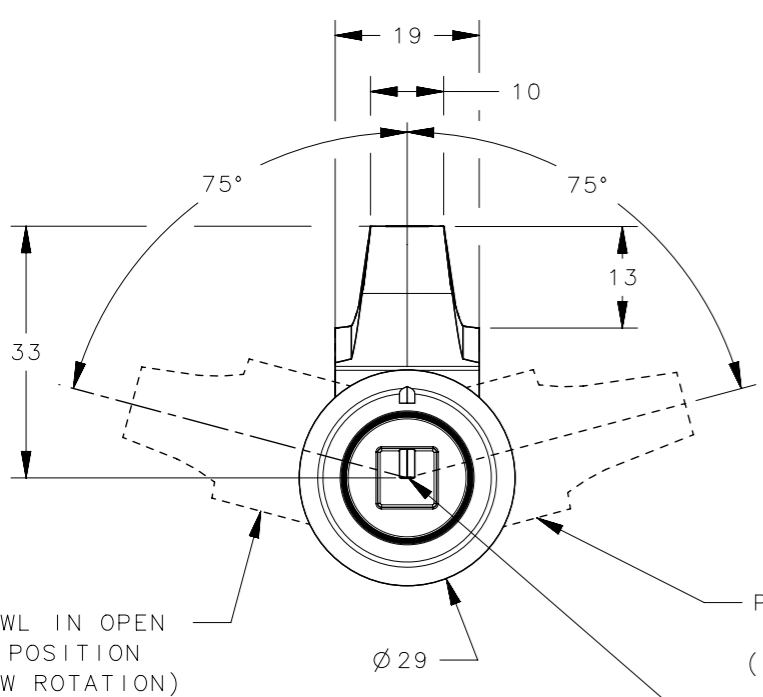
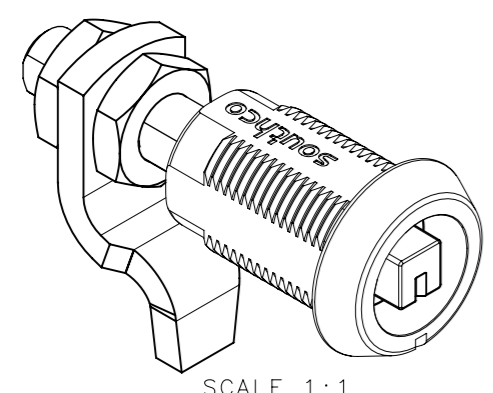


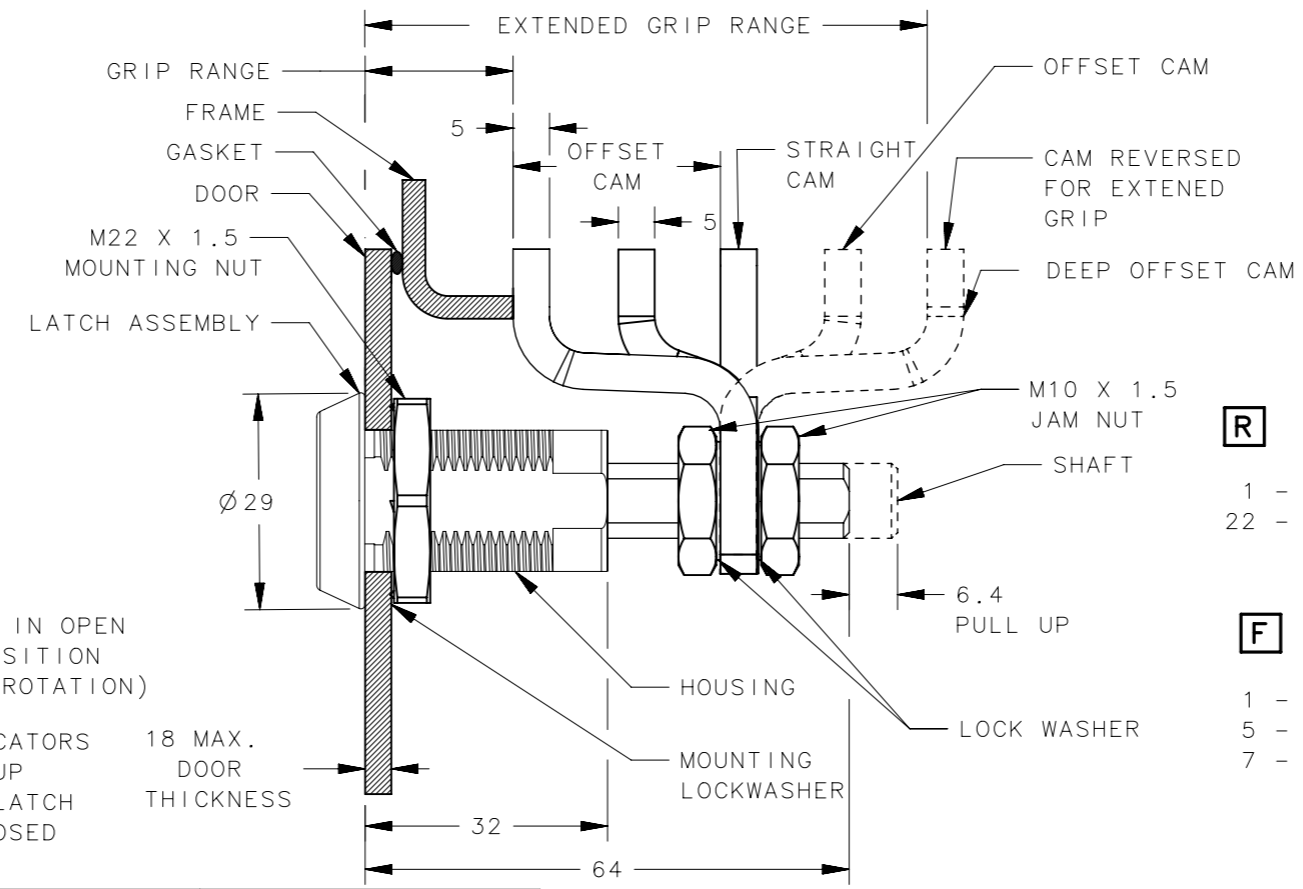
| REVISION HISTORY | | | |
|------------------|-----------|---------|-----------------|
| REV | DATE | BY | DESCRIPTION |
| E | 29JAN2026 | GJL/SAK | PRN: P2026-0158 |



E3-110-25 SHOWN



SCALE 1:1



STANDARD PART NUMBER

E3 - **R** **H** - **G** **F**

- R** - ROTATION
 1 - CLOCKWISE (TYPE A)
 22 - COUNTER CLOCKWISE (TYPE B)
- G** - GRIP
 1 - DEEP OFFSET CAM
 2 - OFFSET CAM
 3 - STRAIGHT CAM
- F** - FINISH
 1 - CHROME PLATED
 5 - BLACK POWDER COATED
 7 - SILVER POWDER COATED

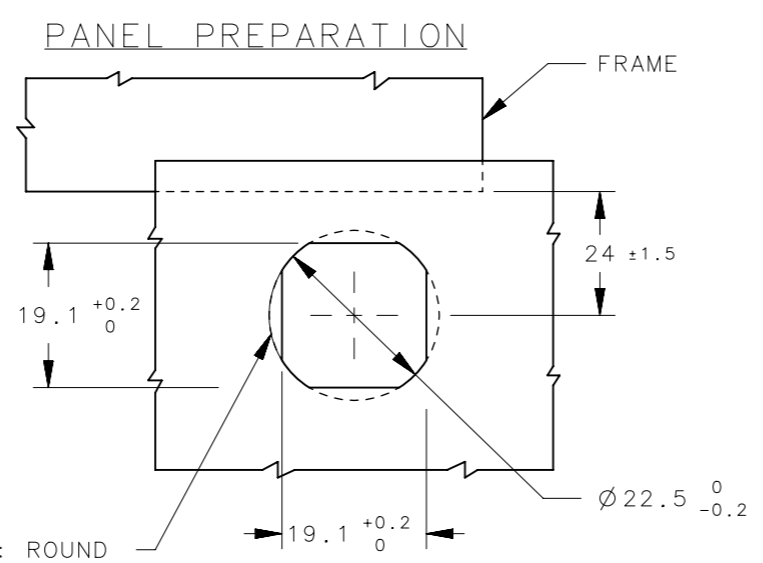
| DRIVER | KEY PART NUMBER |
|--------------------|-------------------------|
| 3mm DOUBLE-BIT | E3-2-1 |
| 7mm TRIANGLE | E3-3-1 |
| 7mm SQUARE | E3-4-1 |
| TUBULAR KEY | E3-5-15 |
| 8mm HEX RECESS | NOT SUPPLIED BY SOUTHCO |
| BELLCORE 216 | E3-12-1 |
| 3mm SLOTTED RECESS | NOT SUPPLIED BY SOUTHCO |
| 8mm SQUARE | E3-8-1 |
| RAILWAY STANDARD | E3-14-1 |

KEYS TO BE ORDERED SEPARATELY

| CAM PART NUMBER AND GRIP RANGE | | | |
|--------------------------------|-----------------|-------------|--------------|
| GRIP STYLE | DEEP OFFSET CAM | OFFSET CAM | STRAIGHT CAM |
| CAM ORIENTATION - FORWARD | 11.4 - 27.2 | 25.4 - 41.1 | 38.9 - 54.6 |
| CAM ORIENTATION - REVERSE | 66.3 - 76.2 | 52.6 - 68.3 | |

| QTY | TYPE OF COMPONENT | MATERIAL | FINISH | USED IN |
|-----|---------------------|----------------------|---------------------------------------|--|
| 1 | KNOB | ZINC ALLOY | SEE FINISH TABLE | KNOB OPERATED HEAD STYLES ONLY |
| 1 | KEYS | BRASS | NATURAL | LOCKING T- HANDLE STYLE ONLY |
| 1 | LOCK ASSEMBLY | ZINC ALLOY AND BRASS | SEE FINISH TABLE | LOCKING T- HANDLE STYLE ONLY |
| 1 | BUSHING | ALUMINUM | SEE FINISH TABLE | TUBULER KEY DRIVE HEAD STYLE ONLY |
| 1 | HANDLE | ZINC ALLOY | SEE FINISH TABLE | ALL T-HANDLE STYLES |
| 1 | CAP | ZINC ALLOY | SEE FINISH TABLE | ALL EXCEPT KNOB OPERATED AND T- HANDLE HEAD STYLES |
| 1 | HOUSING | ZINC ALLOY | SEE FINISH TABLE | ALL |
| 1 | RETAINER | STAINLESS STEEL | NATURAL | ALL |
| 1 | SPRING | STAINLESS STEEL | NATURAL | ALL |
| 1 | O RING | RUBBER | NATURAL | ALL |
| 1 | SLEEVE | STEEL | ZINC CHROMATE COATING PLUS SEALER | ALL |
| 1 | INTERNAL CAM | STEEL | ZINC CHROMATE COATING PLUS SEALER | ALL |
| 1 | SHAFT | STEEL | ZINC CHROMATE COATING PLUS SEALER | ALL |
| 1 | PIN | STEEL | ZINC PLATE, PLUS CHROMATE DIP, YELLOW | ALL |
| 1 | CAM | STEEL | ZINC PLATE, CHROMATE PLUS SEALER | ALL |
| 2 | JAM NUTS | STEEL | ZINC CHROMATE COATING PLUS SEALER | ALL |
| 2 | LOCKWASHER | STEEL | ZINC CHROMATE COATING PLUS SEALER | ALL |
| 1 | MOUNTING NUT | ZINC ALLOY | ZINC CHROMATE COATING PLUS SEALER | ALL |
| 1 | MOUNTING LOCKWASHER | STEEL | ZINC CHROMATE COATING PLUS SEALER | ALL |
| | | | | |

- NOTES:
- OPERATION: 195° TURN OF DRIVER CAUSES CAM TO ROTATE THEN PULL UP 6.4mm.
 - CAM, NUTS AND LOCKWASHER SHIPPED UNASSEMBLED IN BAG WITH LATCH ASSEMBLY.
 - INSTALLATION:
 - INSERT LATCH INTO THE HOLE IN THE DOOR IN THE UNLATCHED POSITION. CHECK FOR PROPER ORIENTATION AND OPERATION OF CAM.
 - INSTALL LOCKWASHER AND MOUNTING NUT (27mm ACROSS FLATS) MAX TIGHTENING TORQUE 20 N/m
 - PLACE THE JAM NUTS, LOCKWASHERS AND CAM ONTO THE SHAFT. WITH LATCH IN CLOSED POSITION, ADJUST JAM NUTS TO POSITION PAWL AT CORRECT GRIP, MAX TIGHTEN TORQUE 20 Nm.
 - CAUTION: ADJUST CAM SO THAT NO MORE THAN 7.9Nm TORQUE ON KEY IS REQUIRED TO CLOSE LATCH.
 - FOR SEALED APPLICATIONS USE OPTIONAL FLANGE GASKET E5-17 (ORDER SEPARATELY).



| | | | | |
|--|---|------------------------|--|--------------|
| CPB NUMBER | STANDARD | THIRD ANGLE PROJECTION | | |
| SURFACE AREA | MILLIMETERS [IN] | | | |
| VOLUME | TOLERANCES UNLESS OTHERWISE NOTED | | DESCRIPTION | |
| PROPRIETARY ITEM | ALL DIMENSIONS WITHOUT TOLERANCES ARE FOR REFERENCE ONLY. | | E3 VISE-ACTION LATCH ZINC, ADJUSTABLE GRIP | |
| EXCEPT FOR USES EXPRESSLY GRANTED IN WRITING, INFORMATION DISCLOSED HEREON IS CONFIDENTIAL AND ALL RIGHTS, PATENT AND OTHERWISE, ARE RESERVED BY SOUTHCO, INC. | PER ASME Y14.5M-2009 | DRAWN BY | DATE | SCALE |
| | | SBK | 09JUN2023 | 1:1 |
| | | | | SHEET 1 OF 2 |

| REVISION HISTORY | | | |
|------------------|-----------|---------|-----------------|
| REV | DATE | BY | DESCRIPTION |
| E | 29JAN2026 | GJL/SAK | PRN: P2026-0158 |

H - HEAD STYLE

TOOL OPERATED STYLE

STANDARD KNOB STYLE

2
3mm DOUBLE BIT

3
7mm TRIANGLE

4
7mm SQUARE

5
SOUTHCO TUBULAR KEY

7
STANDARD KNOB

6
8mm HEX RECESS

9
SLOTTED RECESS

10
8mm SQUARE DRIVER

11
RAILWAY STANDARD

T - HANDLE STYLE

15
BELLCORE 216

16
BELLCORE ELECTRONICS

19
8mm SQUARE

20
8mm TRIANGLE

1
T-HANDLE, NON-LOCKING

8
T-HANDLE, KEY-LOCKING

WING KNOB STYLE

48
5mm DOUBLE BIT

50
WING KNOB, KEY-LOCKING

51
WING KNOB, KEY-LOCKING KEYS CH751

58
WING KNOB, KEY-LOCKING SHUTTERED, KEYS R001

59
WING KNOB, WITHOUT LOCKCORE

BELLCORE 216 AND RAILWAY STANDARD

NOTES:
5. ALL TOOL OPERATED HEAD STYLES ARE 6.4 THICK, EXCEPT RAILWAY STANDARD AND BELLCORE 216 ARE 9 THICK.

| | | | | | | | | | |
|--|----------|---|----------|--|---------------------------------|--------|--|--|--|
| CPB NUMBER | STANDARD | THIRD ANGLE PROJECTION | | | CONNECT • CREATE • INNOVATE | | | | |
| SURFACE AREA | | MILLIMETERS [IN] | | | | | | | |
| VOLUME | | TOLERANCES UNLESS OTHERWISE NOTED | | DESCRIPTION | | | | | |
| PROPRIETARY ITEM | | ALL DIMENSIONS WITHOUT TOLERANCES ARE FOR REFERENCE ONLY. | | E3 VISE-ACTION LATCH ZINC, ADJUSTABLE GRIP | | | | | |
| EXCEPT FOR USES EXPRESSLY GRANTED IN WRITING, INFORMATION DISCLOSED HEREON IS CONFIDENTIAL AND ALL RIGHTS, PATENT AND OTHERWISE, ARE RESERVED BY SOUTHCO, INC. | | PER ASME Y14.5M-2009 | SIZE | SYSTEM | DWG NO. | | | | |
| | | | A3 | NX | J-E3-1 | | | | |
| | | | DRAWN BY | DATE | SCALE | SHEET | | | |
| | | | SBK | 09JUN2023 | 1:2 | 2 OF 2 | | | |