

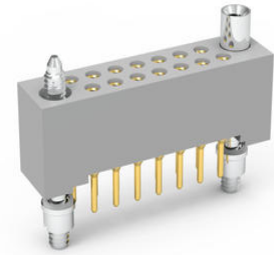


**Part Number :** [WTA36SAD9JTA](#)

**Product Description :** AirBorn W Series Rectangular Board Mount Receptacle with Socket Contacts, Vertical, Through Hole, Dual Row, 0.100"/2.54mm Pitch, 0.140" Tail Length, Plastic Body, Turning Jacketset (.200"), without Mounting Ears, 36 Circuits

**Status :** Active

**Product Category :** Board-to-Board Connectors



---

## Documents and Resources

### Specifications

[Materials Specification](#)

[Performance Specification](#)

[Face Seal Gaskets \(WTA-WTB Series\)](#)

[Hoods \(WTA-WTAX Series\)](#)

[Solder Cup Adapter Sleeve, Coax Removal Tool, Extension Nuts](#)

[Nut Spanner Wrenches, Insertion & Removal Tools, Crimp Tools & Positioners](#)

[Contacts \(WT, WTA, WTB, WTK, WG, WGA\)](#)

[Hardware Availability \(pg 1\)](#)

[Hardware Availability \(pg 2\)](#)

[Polarizing Pin Applications](#)

[Dimensional Information](#)

[Hardware Dimensions \(Fixed & Turning\)](#)

[Part Number Buildup](#)

---

## Part Details

### General

|             |   |
|-------------|---|
| Status      | Active  |
| Category    | Board-to-Board Connectors   |
| Description | AirBorn W Series Rectangular Board Mount Receptacle with Socket Contacts, Vertical, Through Hole, Dual Row, |

|                |  |
|----------------|--|
|                | 0.100"/2.54mm Pitch, 0.140" Tail Length, Plastic Body, Turning Jackset (.200"), without Mounting Ears, 36 Circuits |
| Application    | Board-to-Board, Wire-to-Board  |
| Comments       | Socket, Straight, Through Hole, .140"  |
| Component Type | Receptacle   |
| Contact Type   | Socket   |
| Product Name   | AirBorn W Series   |
| Series         | W Series   |

### Electrical

|                               |       |
|-------------------------------|-------|
| Current - Maximum per Contact | 5.0A  |
| Voltage - Maximum             | 1000V |

### Physical

|                                |                       |
|--------------------------------|-----------------------|
| Breakaway                      | No                    |
| Circuits (Loaded)              | 36                    |
| Circuits (maximum)             | 36                    |
| Color - Resin                  | Gray                  |
| Durability (mating cycles max) | 500                   |
| Glow-Wire Capable              | No                    |
| Guide to Mating Part           | No                    |
| Keying to Mating Part          | None                  |
| Lock to Mating Part            | Yes                   |
| Material - Plating Mating      | Gold                  |
| Material - Shell               | Polyphenylene Sulfide |
| Number of Rows                 | 2                     |
| Orientation                    | Vertical              |
| Packaging Type                 | Tray                  |
| PCB Retention                  | None                  |
| PC Tail Length                 | 0.140"                |
| Pitch - Mating Interface       | 0.100" (2.54mm)       |
| Pitch - Termination Interface  | 0.100" (2.54mm)       |
| Plating min - Mating           | 50μ"                  |

|                               |                |
|-------------------------------|----------------|
| Polarized to Mating Part      | No             |
| Stackable                     | No             |
| Temperature Range - Operating | -65° to +125°C |
| Termination Interface Style   | Through Hole   |

---

## Mates With / Use With

### Mates with Part(s)

| Description   |
|---|
| <u>Rectangular, Plastic, 2 Row, Vertical Board or Cable Mount Plug</u>    |
| <u>Rectangular, Plastic, 2 Row, Vertical Board or Cable Mount Plug</u>    |
| <u>Rectangular, Plastic, 2 Row, Right Angle Board or Cable Mount Plug</u> |
| <u>Rectangular, Plastic, 2 Row, Vertical Board or Cable Mount Plug</u>    |
| <u>Rectangular, Plastic, 2 Row, Crimp Removable Cable Mount Plug</u>      |
| <u>Rectangular, Plastic, 2 Row, Crimp Removable Cable Mount Plug</u>      |