

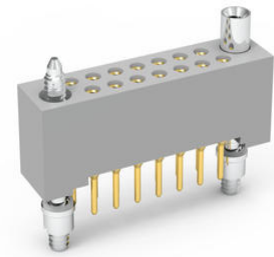


**Part Number :** [WTA60SAD9JTA](#)

**Product Description :** AirBorn W Series Rectangular Board Mount Receptacle with Socket Contacts, Vertical, Through Hole, Dual Row, 0.100"/2.54mm Pitch, 0.140" Tail Length, Plastic Body, Turning Jacketset (.200"), without Mounting Ears, 60 Circuits

**Status :** Active

**Product Category :** Board-to-Board Connectors



---

## Documents and Resources

### Specifications

[Materials Specification](#)

[Performance Specification](#)

[Face Seal Gaskets \(WTA-WTB Series\)](#)

[Hoods \(WTA-WTAX Series\)](#)

[Solder Cup Adapter Sleeve, Coax Removal Tool, Extension Nuts](#)

[Nut Spanner Wrenches, Insertion & Removal Tools, Crimp Tools & Positioners](#)

[Contacts \(WT, WTA, WTB, WTK, WG, WGA\)](#)

[Hardware Availability \(pg 1\)](#)

[Hardware Availability \(pg 2\)](#)

[Polarizing Pin Applications](#)

[Dimensional Information](#)

[Hardware Dimensions \(Fixed & Turning\)](#)

[Part Number Buildup](#)

---

## Part Details

### General

Status	Active
Category	Board-to-Board Connectors
Description	AirBorn W Series Rectangular Board Mount Receptacle with Socket Contacts, Vertical, Through Hole, Dual Row,

	0.100"/2.54mm Pitch, 0.140" Tail Length, Plastic Body, Turning Jackset (.200"), without Mounting Ears, 60 Circuits
Application	Board-to-Board, Wire-to-Board
Comments	Socket, Straight, Through Hole, .140"
Component Type	Receptacle
Contact Type	Socket
Product Name	AirBorn W Series
Series	W Series

### Electrical

Current - Maximum per Contact	5.0A
Voltage - Maximum	1000V

### Physical

Breakaway	No
Circuits (Loaded)	60
Circuits (maximum)	60
Color - Resin	Gray
Durability (mating cycles max)	500
Glow-Wire Capable	No
Guide to Mating Part	No
Keying to Mating Part	None
Lock to Mating Part	Yes
Material - Plating Mating	Gold
Material - Shell	Polyphenylene Sulfide
Number of Rows	2
Orientation	Vertical
Packaging Type	Tray
PCB Retention	None
PC Tail Length	0.140"
Pitch - Mating Interface	0.100" (2.54mm)
Pitch - Termination Interface	0.100" (2.54mm)
Plating min - Mating	50μ"

Polarized to Mating Part	No
Stackable	No
Temperature Range - Operating	-65° to +125°C
Termination Interface Style	Through Hole

---

## Mates With / Use With

### Mates with Part(s)

Description
<u>Rectangular, Plastic, 2 Row, Vertical Board or Cable Mount Plug</u>
<u>Rectangular, Plastic, 2 Row, Vertical Board or Cable Mount Plug</u>
<u>Rectangular, Plastic, 2 Row, Right Angle Board or Cable Mount Plug</u>
<u>Rectangular, Plastic, 2 Row, Vertical Board or Cable Mount Plug</u>
<u>Rectangular, Plastic, 2 Row, Crimp Removable Cable Mount Plug</u>
<u>Rectangular, Plastic, 2 Row, Crimp Removable Cable Mount Plug</u>